

BUILDING DATA SHEET

227 Holmes Street

GENERAL INFORMATION

County: Franklin
Reference City: Frankfort
School District: Franklin County Schools
Location: 227 Holmes Street
Total Square Feet: 9,500 sf
Site Acres:
Building Type: block
Available Parking: 6 spaces
Zoning: Commercial
Additional Acres:
Within City Limits: Yes
Protective Covenants:
Multi-Story:
Multi-Tenant: Could divide the interior space
Year Built:
Renovations:
Primary Use:
Former Use: Commercial Print Shop

BUILDING SPECIFIC

Bay Size:
Ceiling Height (ft)
Minimum:
At Eaves:
Maximum:
At Center:
Sprinklered:
Wet/Dry
Cranes Available:
Floor Type:
Thickness:
Reinforced:
Dimensions:
Truck Docks
Inside Truck Docks:
Outside Truck Docks: 1
Drive-in Doors:
Type of construction: Concrete block
Heat:
A/C: 1600 AMP with switchgear at the back of the building.

PRICE

Lease rate is negotiable

OWNERSHIP

United Graphics – Gene Mullins 859-255-7978

LINKS TO ADDITIONAL INFO

UTILITIES

Electricity:
Frankfort Plant Board

Natural Gas:
Columbia Gas of Kentucky, Inc.
---inch line

Sewer:
City of Frankfort Sewer Department
-- inch

System Information (gallons per day):
Treatment Capacity: 9,900,000
Average Daily Flow: 6,100,000
Excess Capacity: 3,800,000

Water:
Frankfort Plant Board
---inch line

System Information (gallons per day):
Treatment Capacity: 18,000,000
Average Daily Flow: 8,524,000
Excess Capacity: 9,476,000

Broadband/Internet
Frankfort Plant Board; AT&T

TRANSPORTATION

Nearest Interstate/Parkway:
I-64, I-75

General Highway Access Description:

Nearest Airport:
Capital City Airport

Commercial/International:
Bluegrass Airport
(21 miles southeast of Frankfort)

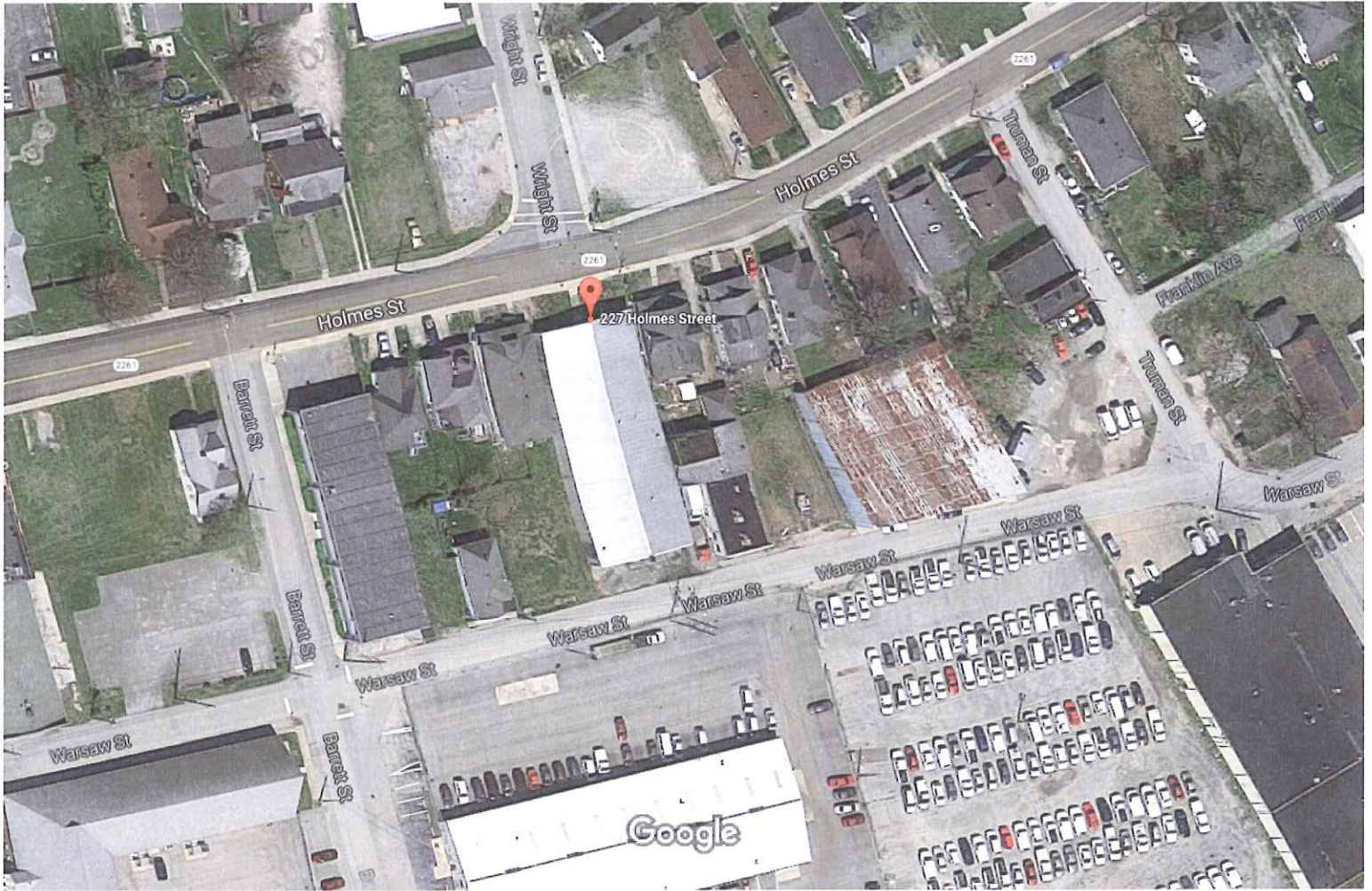
Rail Access:

Nearest Riverport:
Louisville-Jefferson County Riverport
(65 miles from site)

REMARKS

All information regarding property is from source deemed reliable, but no warranty or representation is made by KCDC or any of its affiliates as to its accuracy. It is subject to errors, omissions, change of price, prior sale, lease, or withdrawal. Further, no warranty or representation is made as to the environmental suitability or condition of the property. Prospective purchasers and/or lessees should perform their own due diligence in determining the suitability of a property for their intended use.

Google Maps 227 Holmes St



Imagery ©2017 Google, Map data ©2017 Google 50 ft