

SITE DATA SHEET
567 East Main Street
Total Acreage: approximately 0.49
Largest Possible Tract: approximately 0.49

GENERAL INFORMATION

County: Franklin
Reference City: Frankfort
School District: Franklin County Schools
Location: 581 East Main Street
Zoning: Commercial

TRANSPORTATION

Nearest Interstate/Parkway:
I-64, I-75

General Highway Access Description:

Nearest Airport:
Capital City Airport

Commercial/International:
Bluegrass Airport
(21 miles southeast of Frankfort)

Rail Access:

Nearest Riverport:
Louisville-Jefferson County Riverport
(65 miles from site)

PRICE

\$99,000

OWNERSHIP

UTILITIES

Electricity:
Frankfort Plant Board

Natural Gas:
Columbia Gas of Kentucky, Inc.

Sewer:
City of Frankfort Sewer Department

System Information (gallons per day):
Treatment Capacity: 9,900,000
Average Daily Flow: 6,100,000
Excess Capacity: 3,800,000

Water:
Frankfort Plant Board

System Information (gallons per day):
Treatment Capacity: 18,000,000
Average Daily Flow: 8,524,000
Excess Capacity: 9,476,000

Broadband/Internet
Frankfort Plant Board; AT&T

LINKS TO ADDITIONAL INFO

N/A

REMARKS

All information regarding property is from source deemed reliable, but no warranty or representation is made by KCDC or any of its affiliates as to its accuracy. It is subject to errors, omissions, change of price, prior sale, lease, or withdrawal. Further, no warranty or representation is made as to the environmental suitability or condition of the property. Prospective purchasers and/or lessees should perform their own due diligence in determining the suitability of a property for their intended use.

[Picture](#)

Listing Summary

Listing #1603773
\$99,000 (LP)

567 E Main St, Frankfort, KY 40601 **Active** (02/22/16)
Acres: **Lot Sz: 0**
Area: 014 **Area Name: Franklin County**

Remarks

nice vacant commercial lot on east main street with high traffic. all city utilities available Lot dimensions per deed are: 193x150x126x153



Agent
Co-Agent
Office
Co-Office
Area
Subdivision
County
Directions to Property

Lee New Primary:502-330-1231 Secondary:502-223-5500 Other:502-330-1231
 Jeffrey A Simpson Primary:502-226-0251 Secondary:502-223-5500 Other:502-695-3043
 Capital Realty and Investments Phone: 502-223-5500, FAX: 502-223-7852
 Capital Realty and Investments Phone: 502-223-5500, FAX: 502-223-7852
 Franklin County
 Commercial
 Franklin
 east main street (US 60)

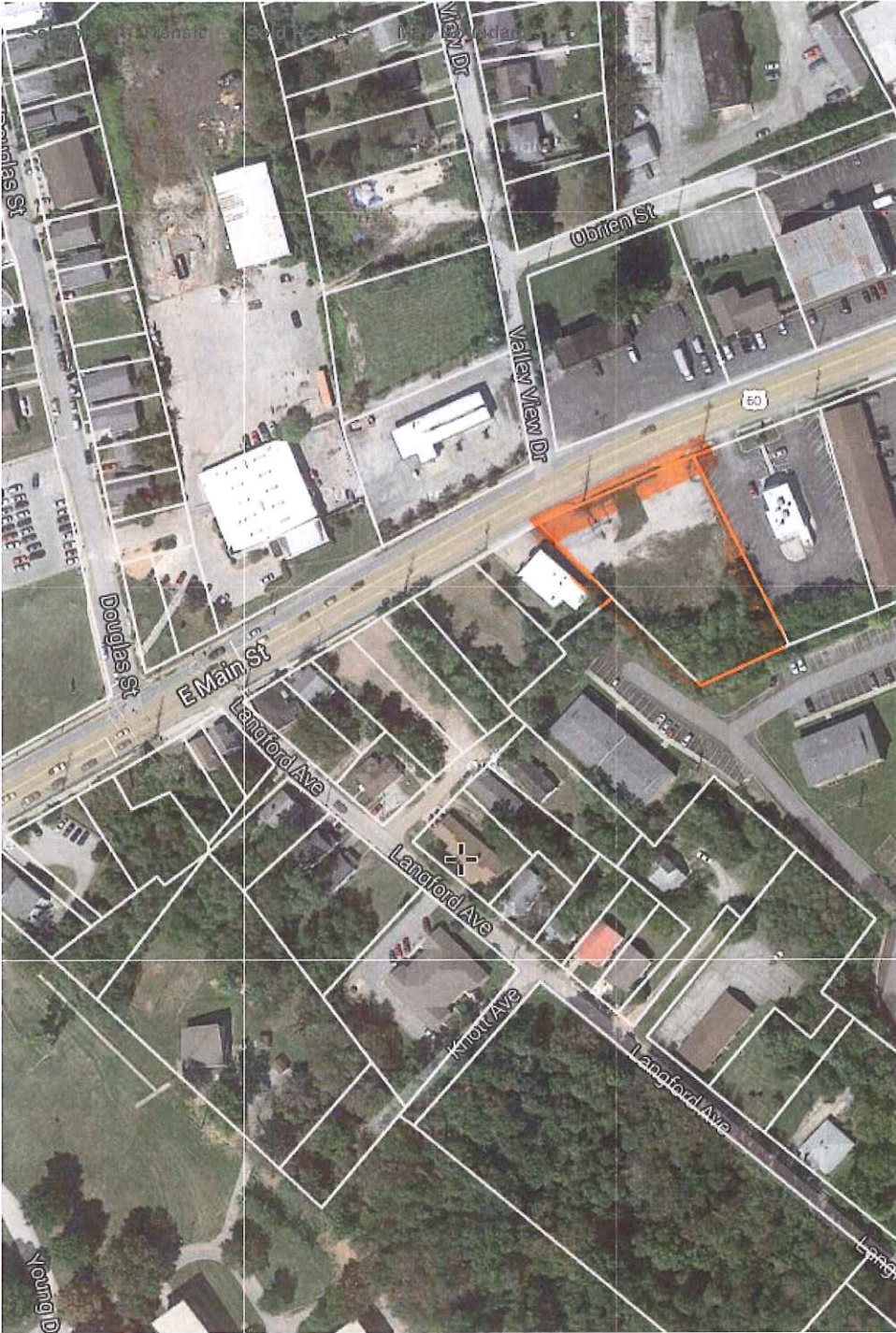
Land Features

Terms Exchange

[Home](#) | [Agents/Offices](#) | [Reload Page](#)

Information has not been verified, is not guaranteed and subject to change.
 Copyright ©2017 Rapattoni Corporation. All rights reserved.
 U.S. Patent 6,910,045
 Generated: 3/20/17 9:46am





Directions:

driving transit walking

Enter a location

[Get Directions](#)

Bird's Eye



Street View



[Satellite](#) | [Road](#)