

SITE DATA SHEET

Englewood Park Professional Office Lots
Total Acreage: 22.27 acres available in 10 lots - see attached map
Largest Possible Tract: see attached map

GENERAL INFORMATION

County: Franklin
Reference City: Frankfort
School District: Franklin County Schools
Location: Englewood Drive off of Duncan Road
Zoning: PO – Professional Office

TRANSPORTATION

Nearest Interstate/Parkway:

I-64, I-75

General Highway Access Description:

Nearest Airport:

Capital City Airport

Commercial/International:

Bluegrass Airport
(21 miles southeast of Frankfort)

Rail Access:

Nearest Riverport:

Louisville-Jefferson County Riverport
(65 miles from site)

PRICE

\$ not known

OWNERSHIP

Gary Bizzack 859-268-1875

UTILITIES

Electricity:

Frankfort Plant Board

Natural Gas:

Columbia Gas of Kentucky, Inc.

Sewer:

City of Frankfort Sewer Department

System Information (gallons per day):

Treatment Capacity:	9,900,000
Average Daily Flow:	6,100,000
Excess Capacity:	3,800,000

Water:

Frankfort Plant Board

System Information (gallons per day):

Treatment Capacity:	18,000,000
Average Daily Flow:	8,524,000
Excess Capacity:	9,476,000

Broadband/Internet

Frankfort Plant Board; AT&T

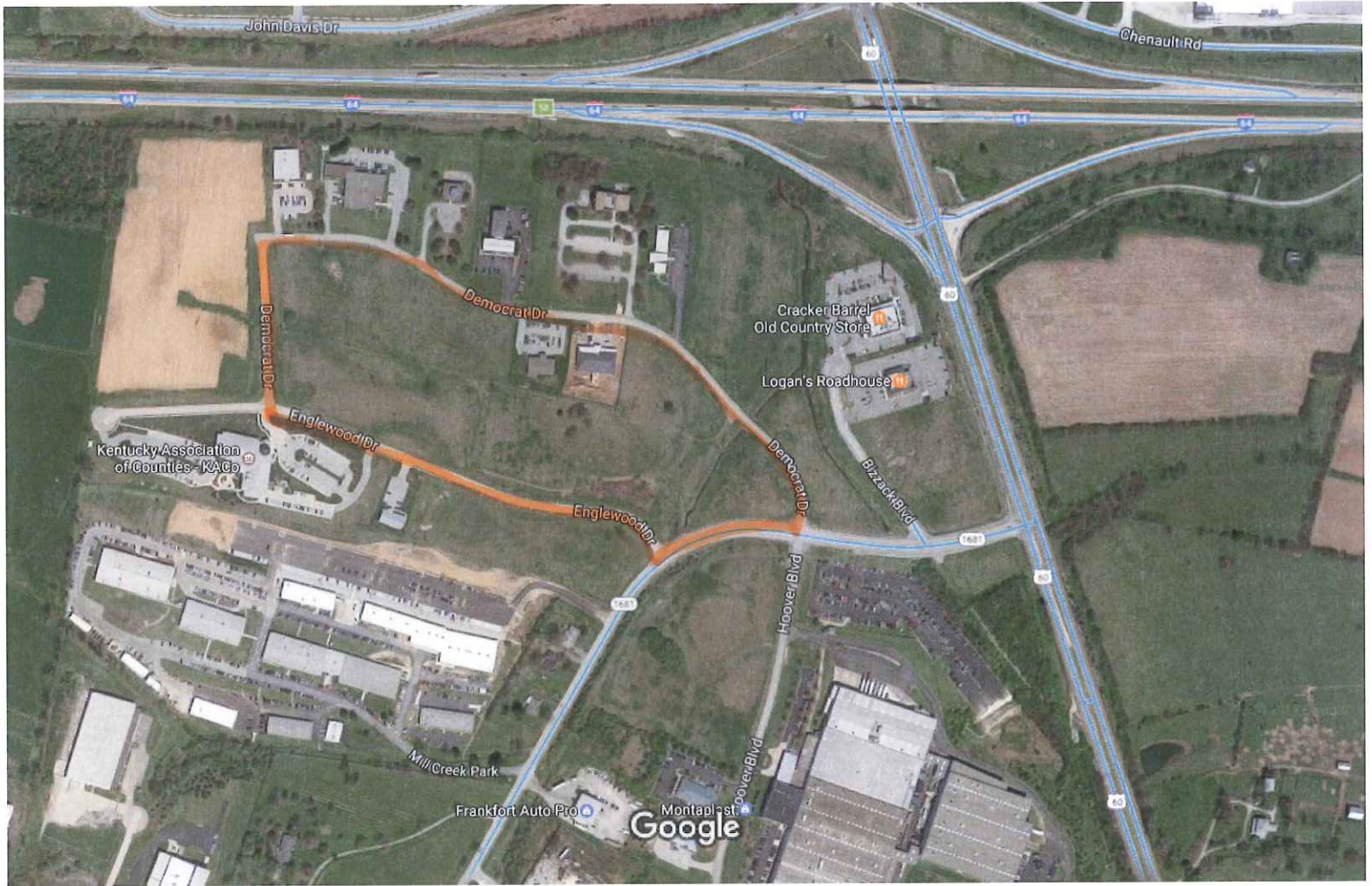
LINKS TO ADDITIONAL INFO

N/A

REMARKS

All information regarding property is from source deemed reliable, but no warranty or representation is made by KCDC or any of its affiliates as to its accuracy. It is subject to errors, omissions, change of price, prior sale, lease, or withdrawal. Further, no warranty or representation is made as to the environmental suitability or condition of the property. Prospective purchasers and/or lessees should perform their own due diligence in determining the suitability of a property for their intended use.

Google Maps 3350 Louisville Rd



Imagery ©2017 Google, Map data ©2017 Google 200 ft

INTERSTATE 64

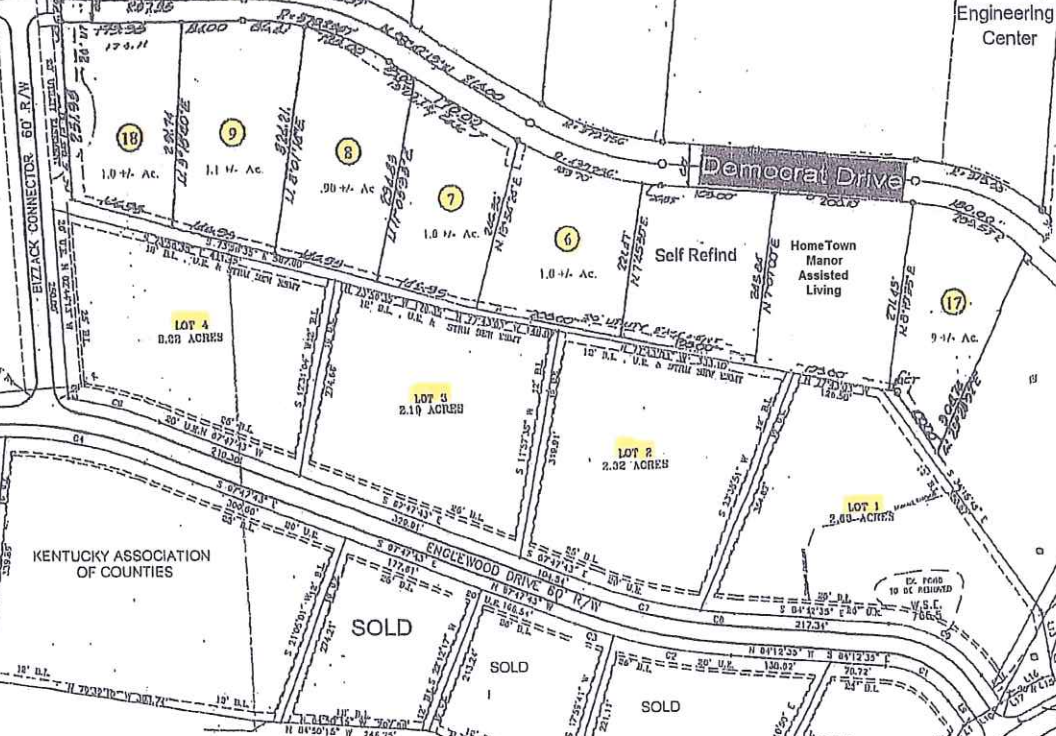
Englewood Park



Franklin County Schools
Kentucky Court of Appeals
SOLD
Kentucky School Boards Association
State Democratic Headquarters
Kentucky Engineering Center

U.S. 60

Democrat Drive



LOT 4
0.88 ACRES

LOT 3
2.14 ACRES

LOT 2
2.32 ACRES

LOT 1
2.60 ACRES

Self Refind
HomeTown Manor Assisted Living

KENTUCKY ASSOCIATION OF COUNTIES

Sold

SOLD

SOLD

SOLD

SOLD

Englewood Business Center

Frankfort Franklin County Kentucky

03/2016