



**SITE DATA SHEET**  
**Englewood Park Professional Office Lots**  
**Total Acreage: see attached map**  
**Largest Possible Tract: see attached map**

**GENERAL INFORMATION**

**County:** Franklin  
**Reference City:** Frankfort  
**School District:** Franklin County Schools  
**Location:** Englewood Drive off of Duncan Road  
**Zoning:** PO – Professional Office

**TRANSPORTATION**

**Nearest Interstate/Parkway:**  
I-64, I-75

**General Highway Access Description:**

**Nearest Airport:**  
Capital City Airport

**Commercial/International:**  
Bluegrass Airport  
(21 miles southeast of Frankfort)

**Rail Access:**

**Nearest Riverport:**  
Louisville-Jefferson County Riverport  
(65 miles from site)

**PRICE**

\$ not known

**OWNERSHIP**

Gary Bizzack 859-268-1875

**UTILITIES**

**Electricity:**  
Frankfort Plant Board

**Natural Gas:**  
Columbia Gas of Kentucky, Inc.

**Sewer:**  
City of Frankfort Sewer Department

System Information (gallons per day):  
Treatment Capacity: 9,900,000  
Average Daily Flow: 6,100,000  
Excess Capacity: 3,800,000

**Water:**  
Frankfort Plant Board

System Information (gallons per day):  
Treatment Capacity: 18,000,000  
Average Daily Flow: 8,524,000  
Excess Capacity: 9,476,000

**Broadband/Internet**  
Frankfort Plant Board; AT&T

**LINKS TO ADDITIONAL INFO**

N/A

**REMARKS**

INTERSTATE 64

U.S. 60

Englewood Park



Franklin County Schools  
Kentucky Court of Appeals  
SOLD  
Kentucky School Boards Association  
State Democratic Headquarters  
Kentucky Engineering Center



LOT 4  
0.89 ACRES

LOT 3  
2.14 ACRES

LOT 2  
2.32 ACRES

LOT 1  
2.61-ACRES

KENTUCKY ASSOCIATION OF COUNTIES

SOLD

SOLD

SOLD

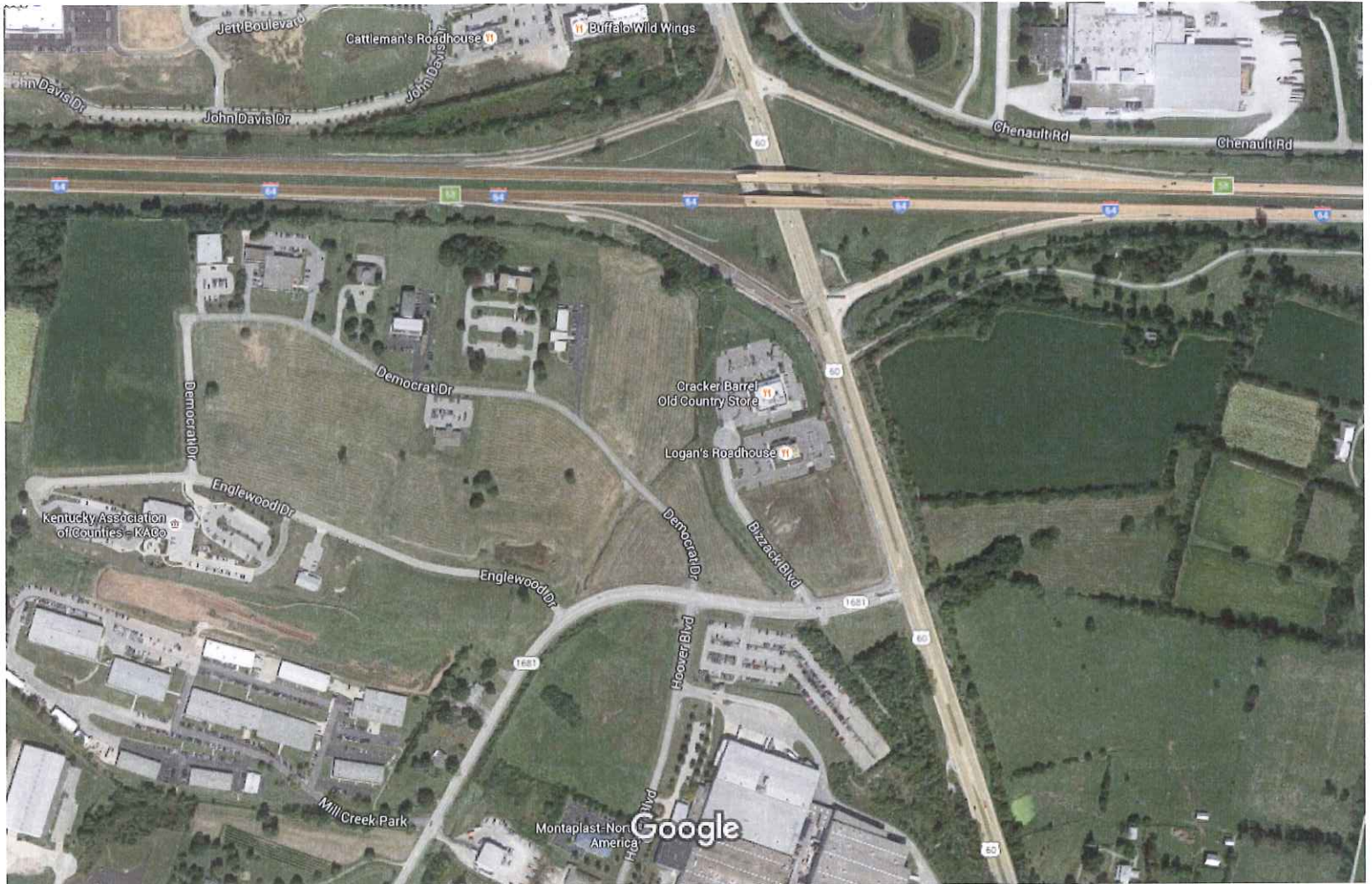
SOLD

Sold

Englewood Business Center

Frankfort Franklin County Kentucky

03/2016



Imagery ©2016 Google, Map data ©2016 Google 200 ft

Google Maps